





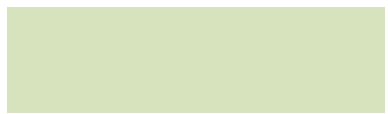



Sotto-articolazione della struttura organizzativa

Funzionigramma dell'Amministrazione Centrale








Ottobre 2023

Funzionigramma di Ateneo

Legenda dei Colori

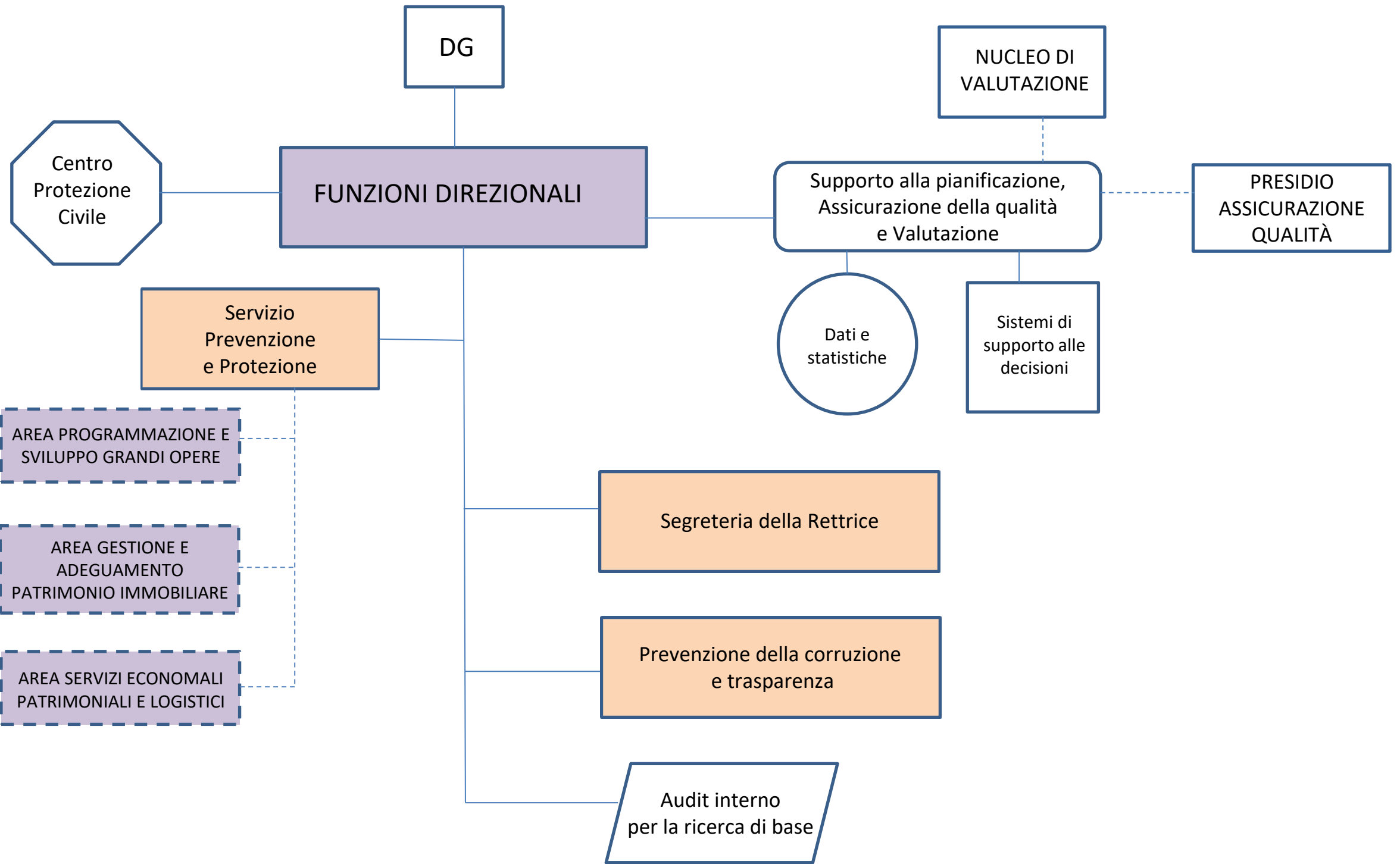
	= Area/Struttura
	= Processo
	= Coordinamento
	= Servizio all'utenza
	= Servizio interno
	= Collegamento diretto tra le funzioni all'interno di ogni Area/struttura
	= Collegamento con altre funzioni/Aree/Strutture

Legenda dei Simboli

	= Coordinamento (CC) /Unità di Processo (UP) / Struttura
	= Unità Funzionale (UF)
	= Funzione Responsabilità (FR)
	= Funzione Specialistica (FS)
	= Posizione Professionale (PP)
	= Direzione tecnica
	= Attività a rilevanza

Dal link delle Aree/Funzioni/Strutture si accede alle pagine corrispondenti del Cerca-Chi e alle informazioni sulle mission e sulle assegnazioni del personale

Funzioni direzionali

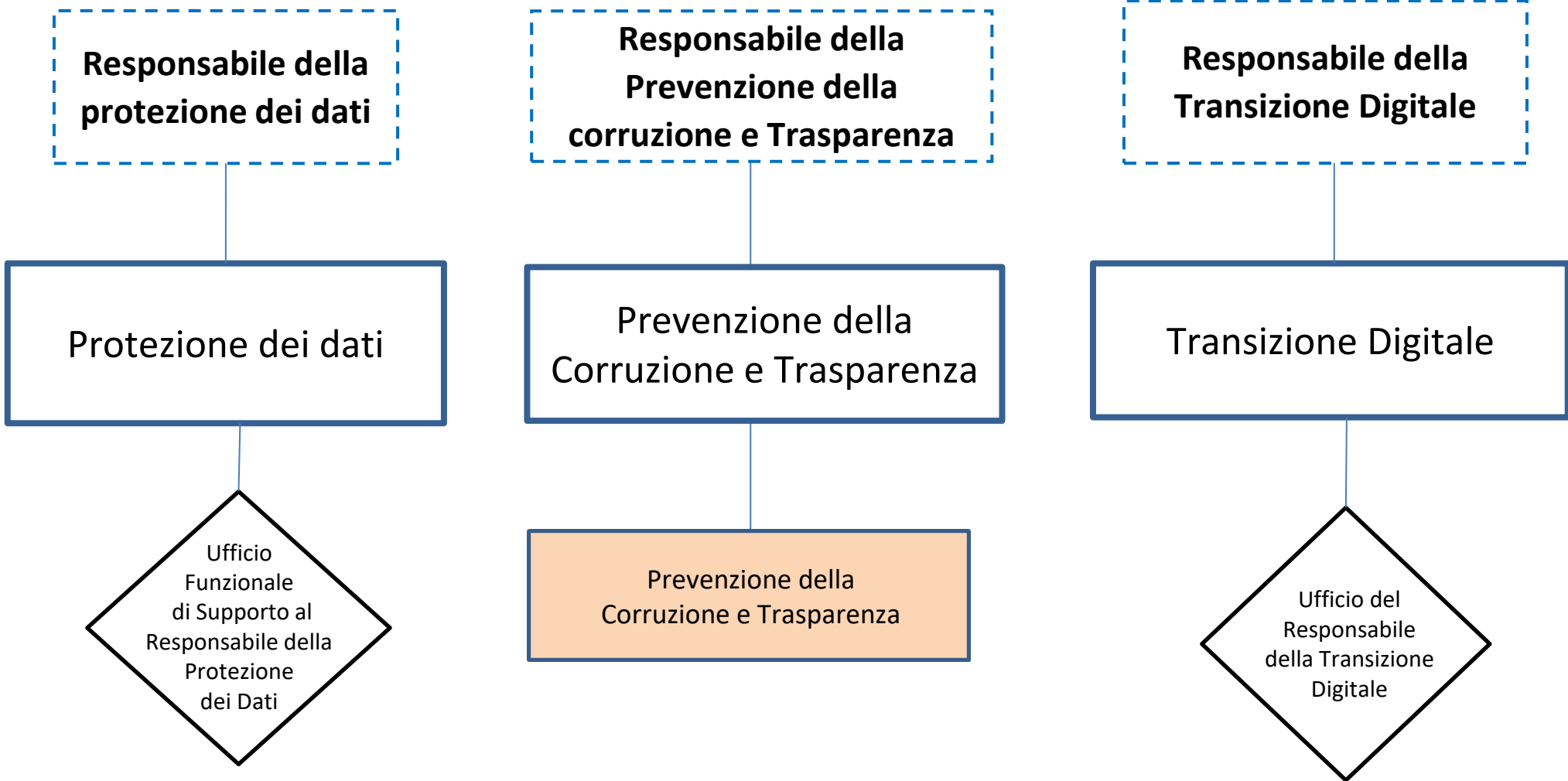


S
T
R
U
T
T
U
R
E

UTENTI

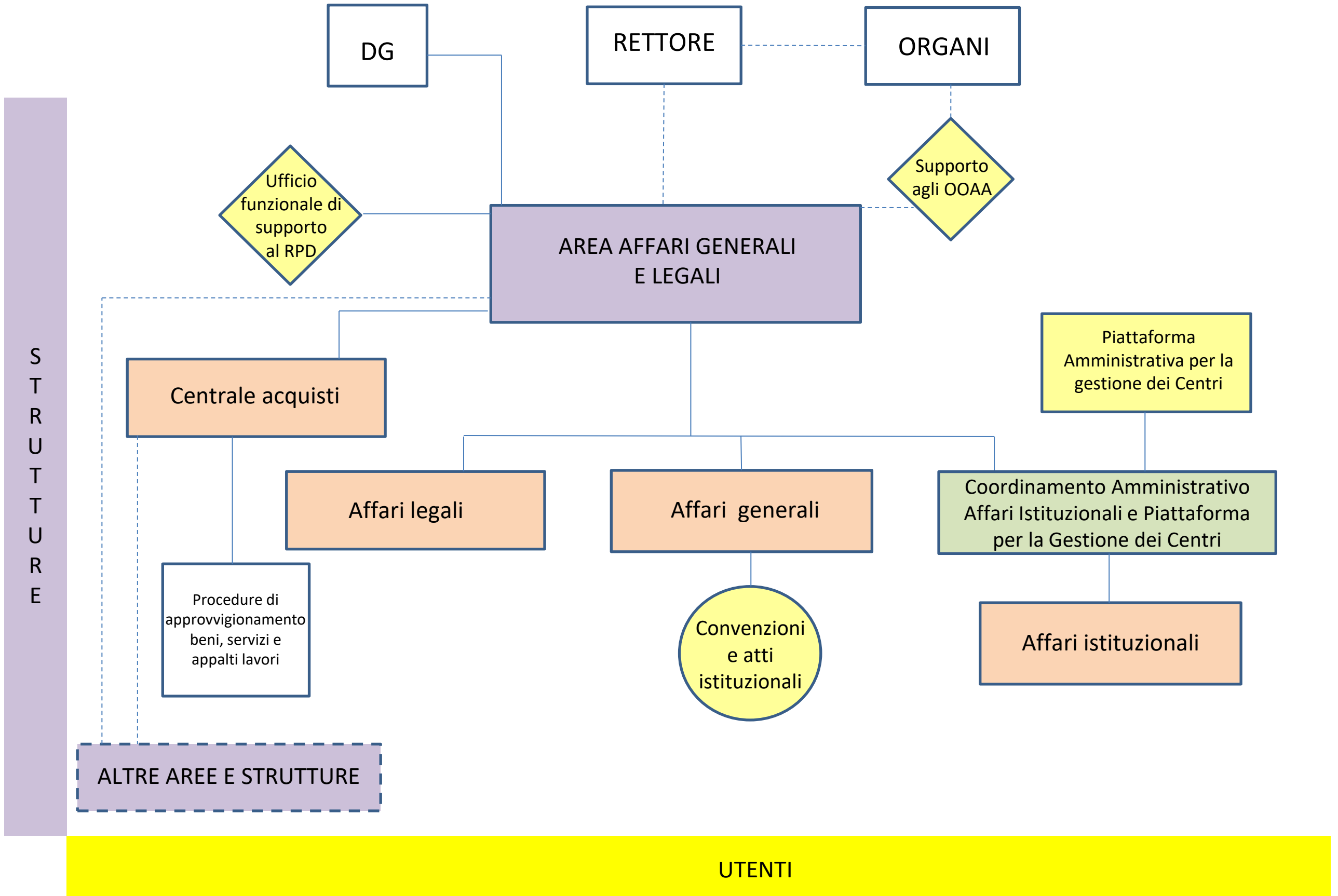
Incarichi dirigenziali ai sensi della normativa vigente

S
T
R
U
T
T
U
R
E

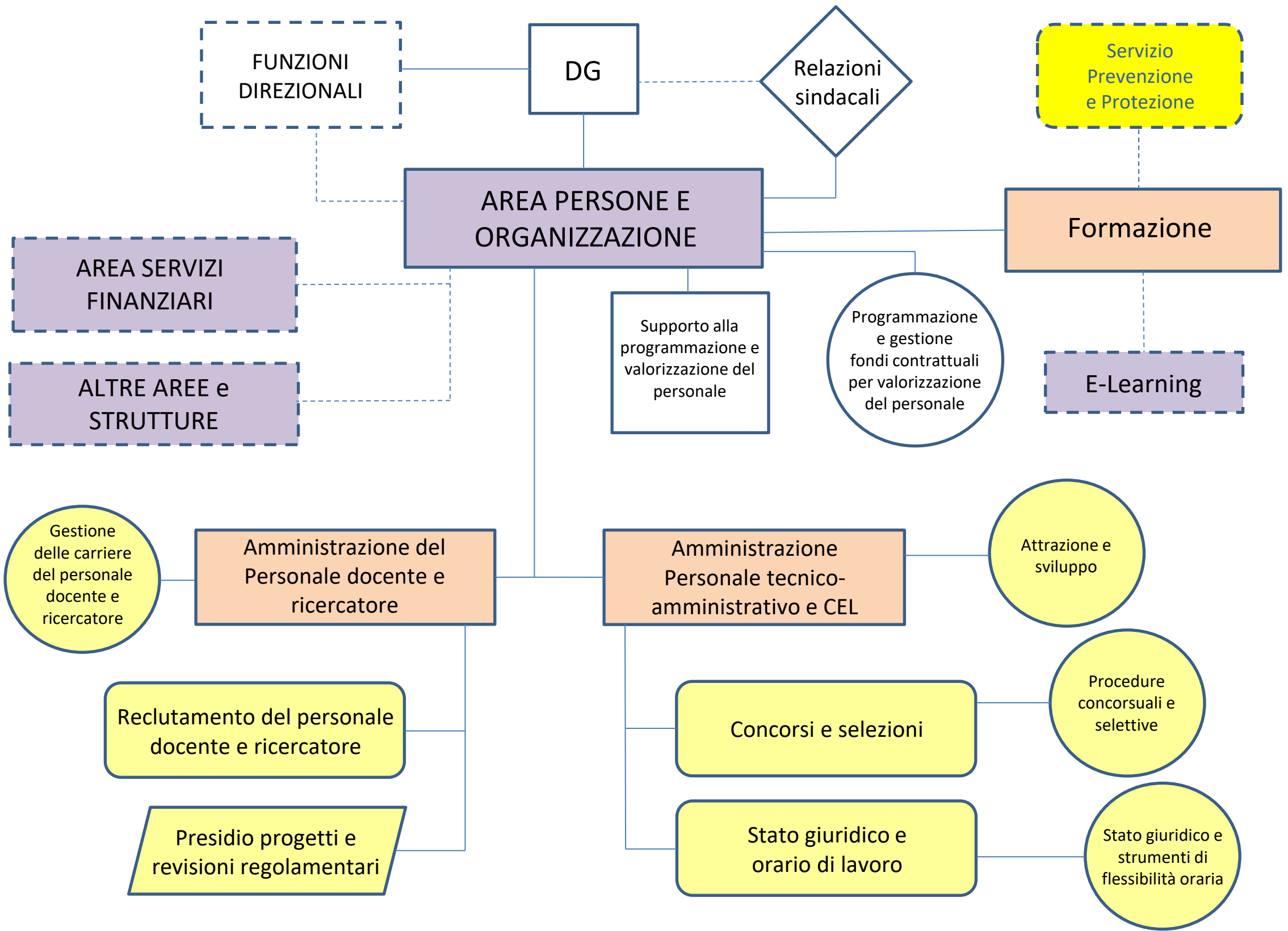


UTENTI

Area Affari Generali e Legali



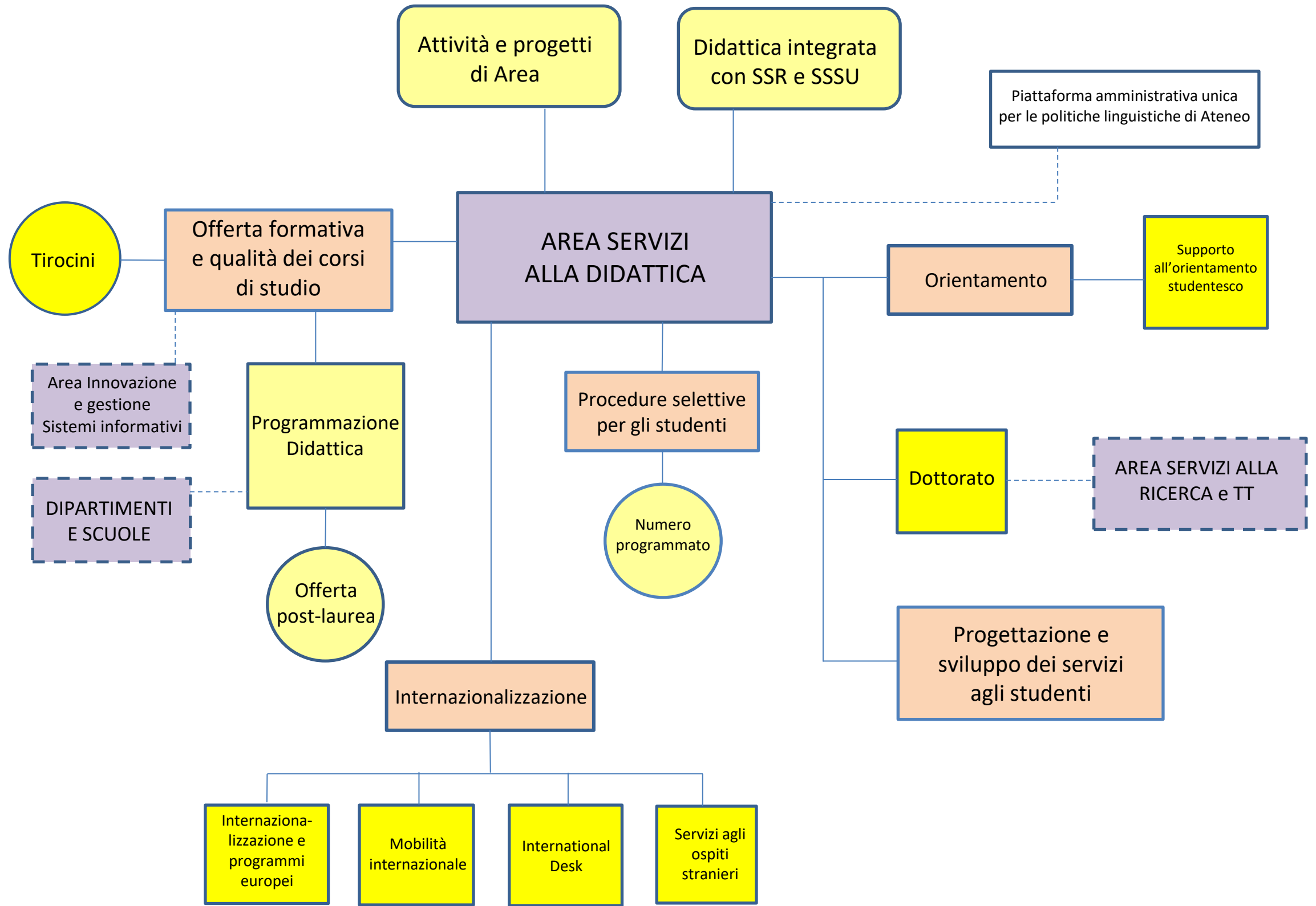
Area Persone e organizzazione



S
T
R
U
T
T
U
R
E

UTENTI

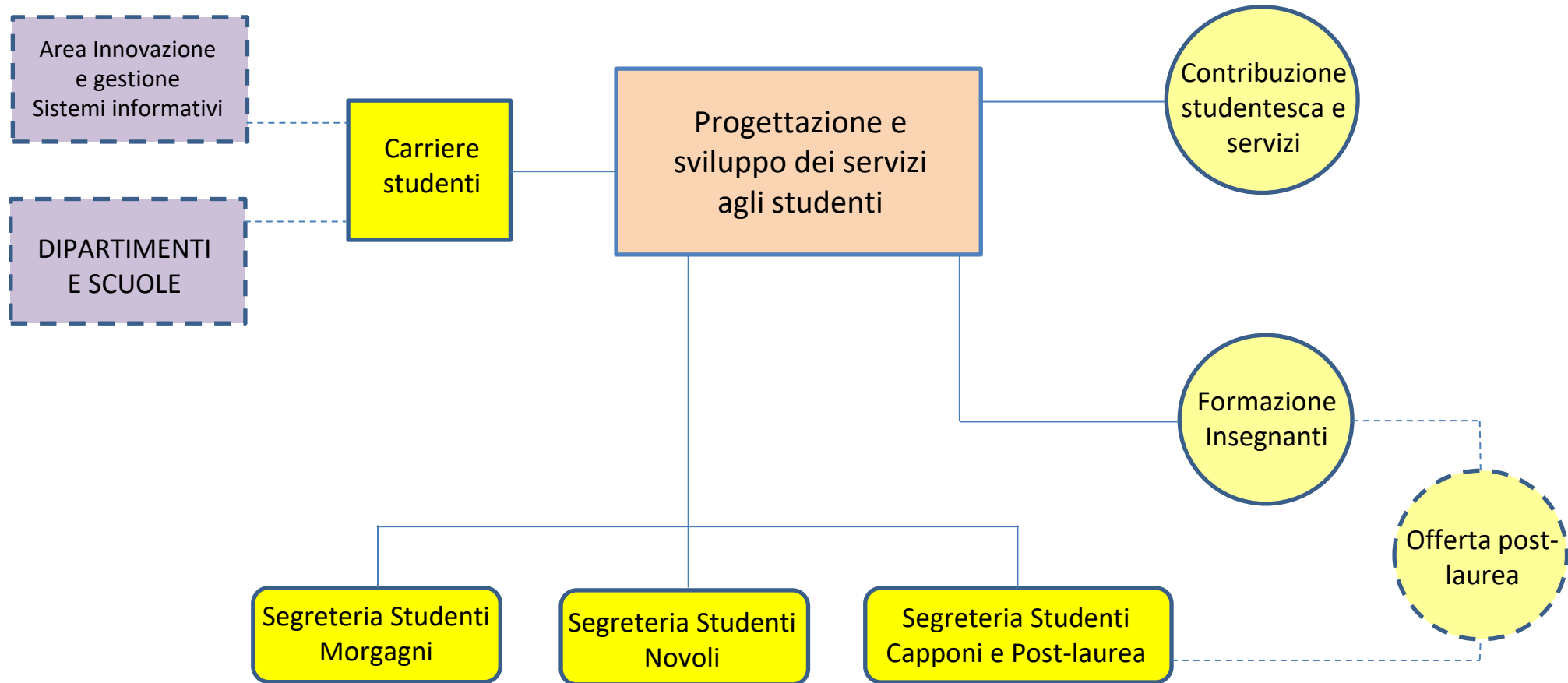
Area Servizi alla Didattica



S
T
R
U
T
T
U
R
E

UTENTI

Area Servizi alla Didattica

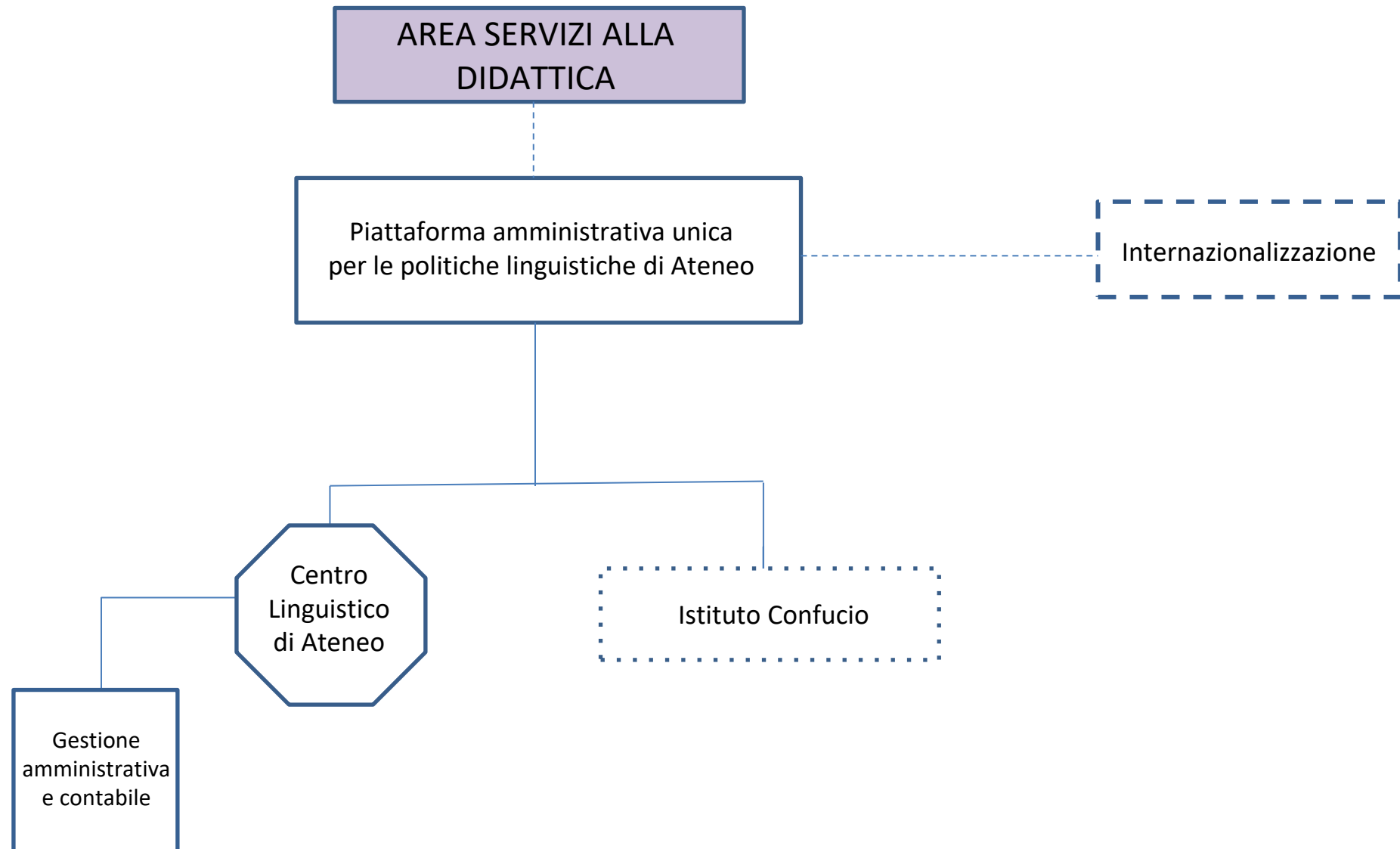


S
T
R
U
T
T
U
R
E

UTENTI

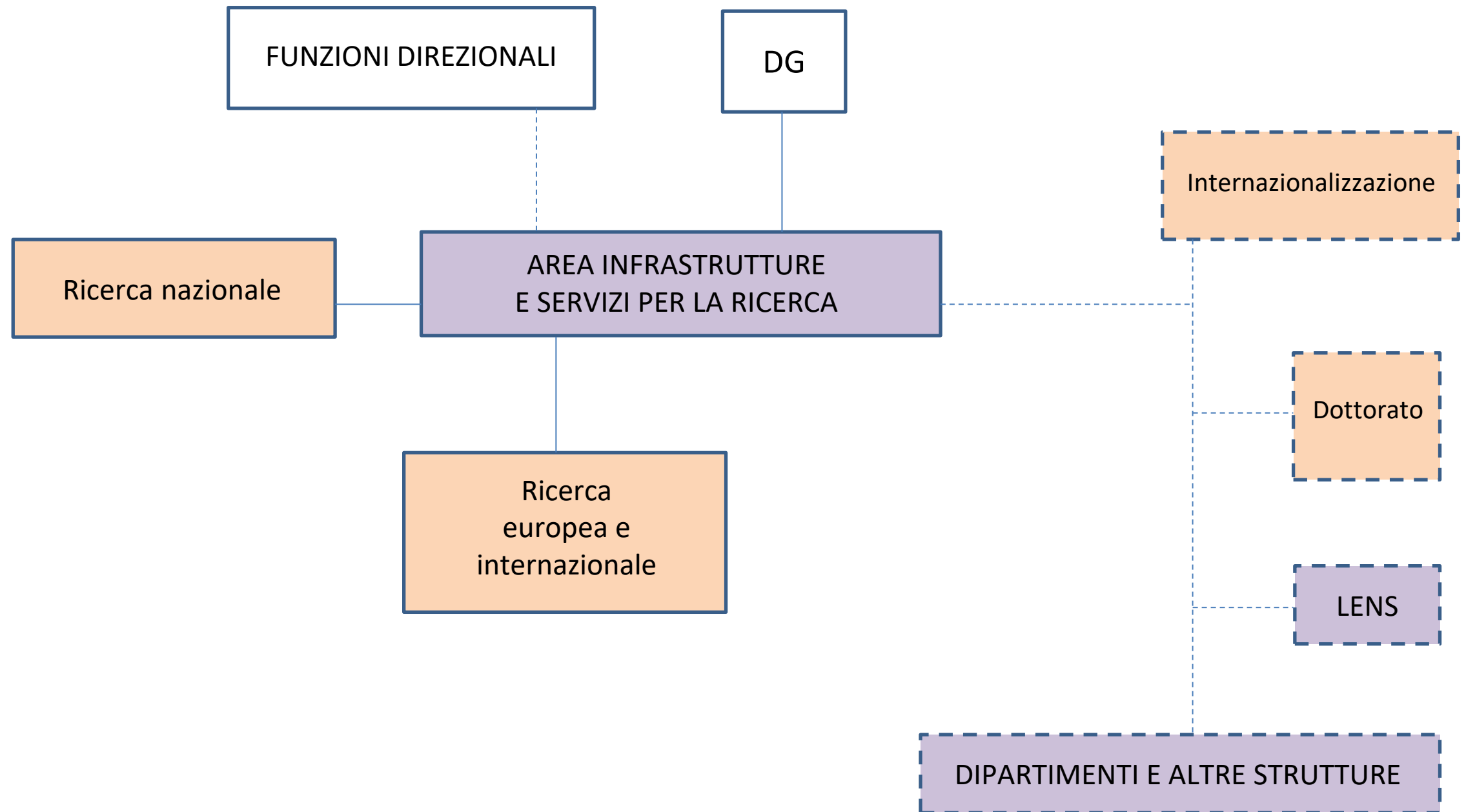
Piattaforma amministrativa unica per le politiche linguistiche di Ateneo

S
T
R
U
T
T
U
R
E



UTENTI

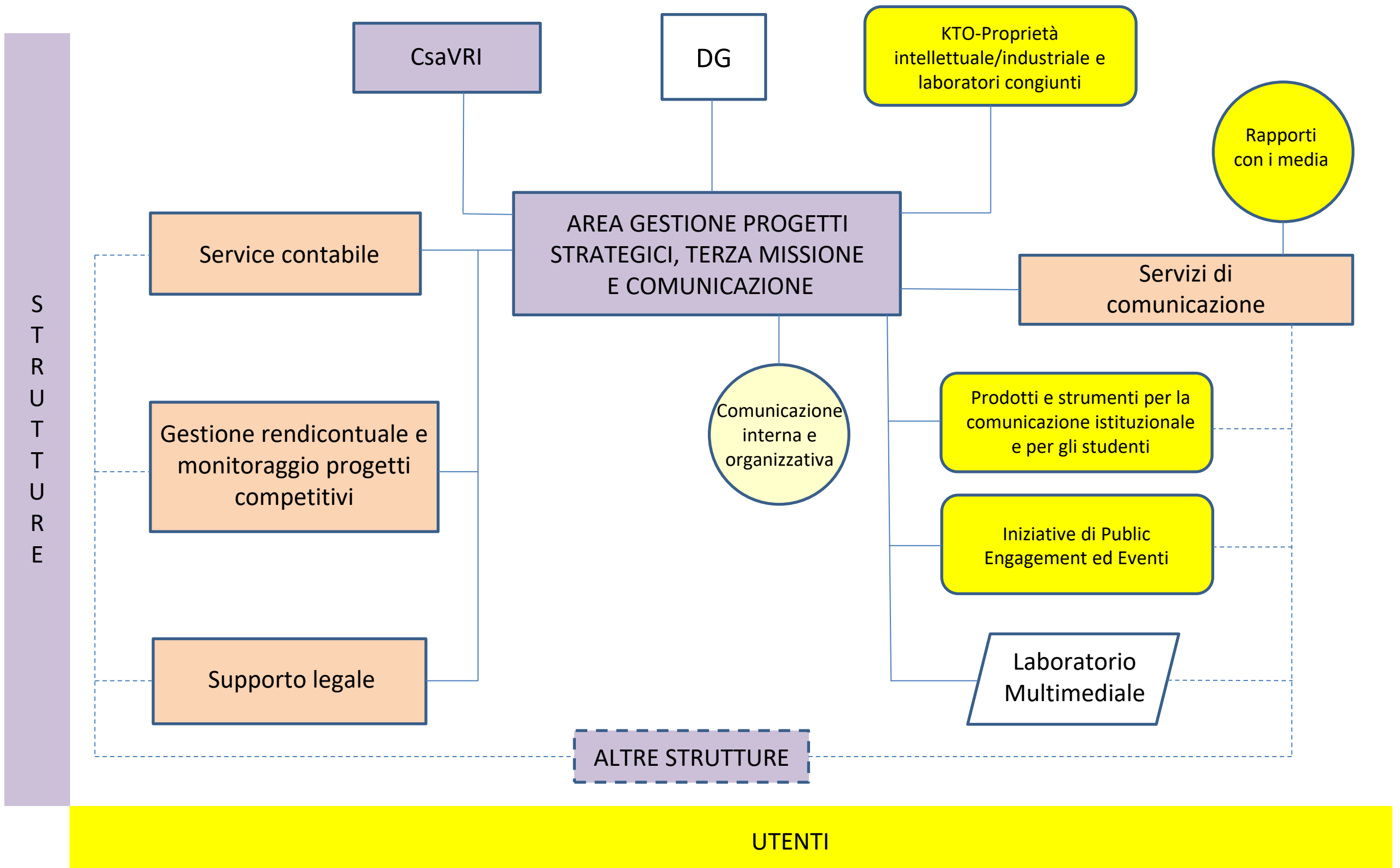
Area Infrastrutture e Servizi per la ricerca



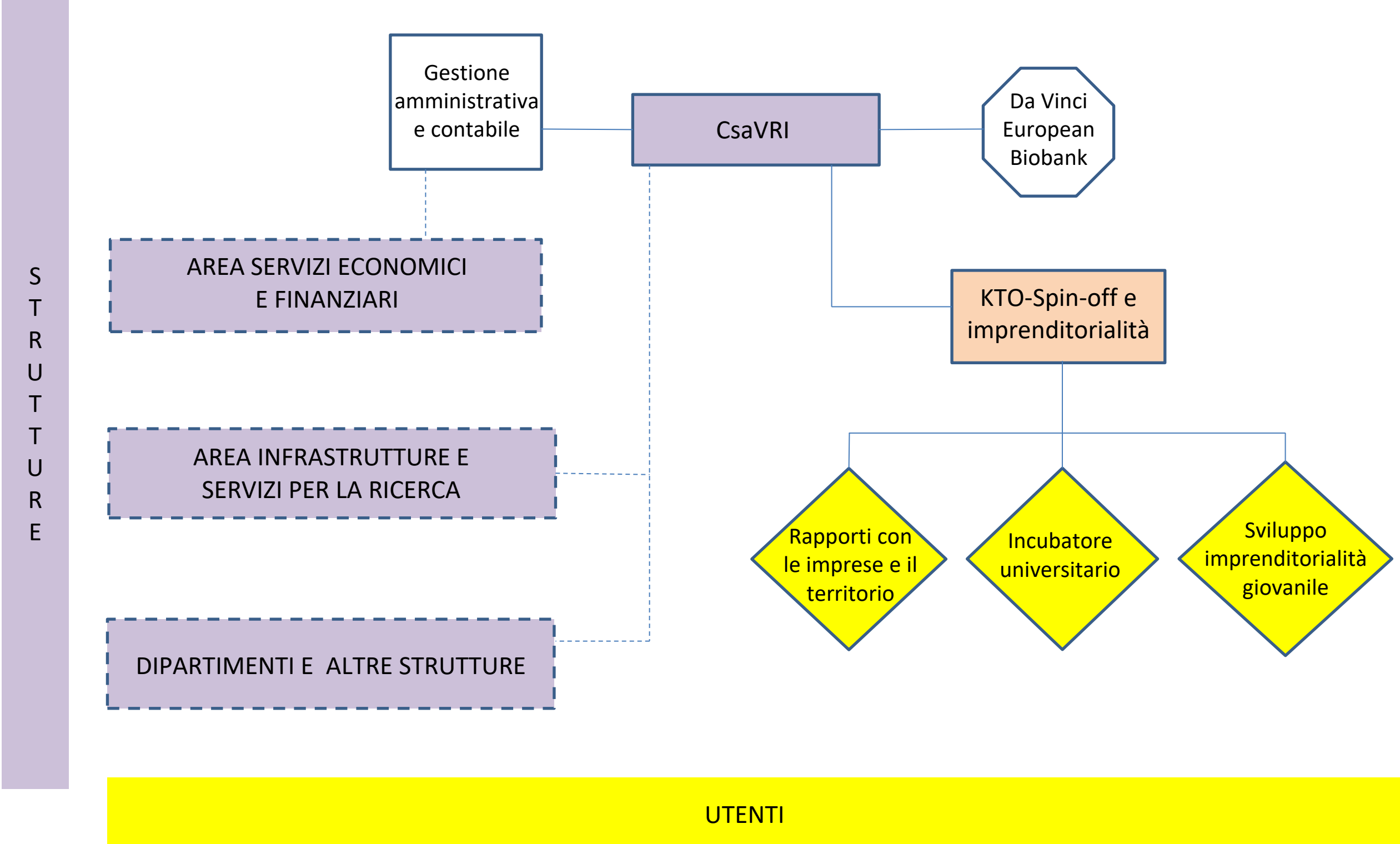
STRUTTURE

UTENTI

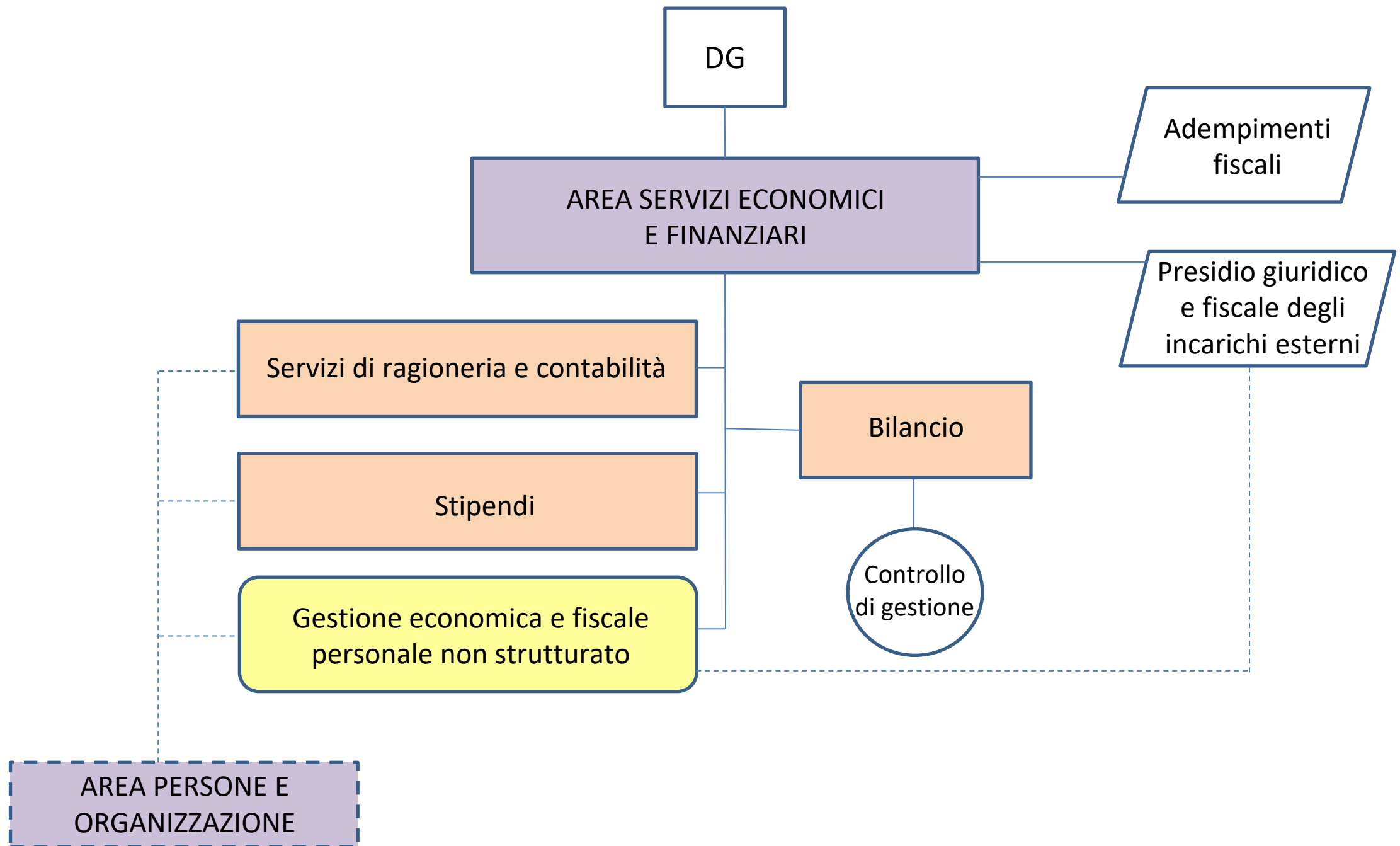
Area Gestione progetti strategici, terza missione e comunicazione



Area Gestione progetti strategici, terza missione e comunicazione



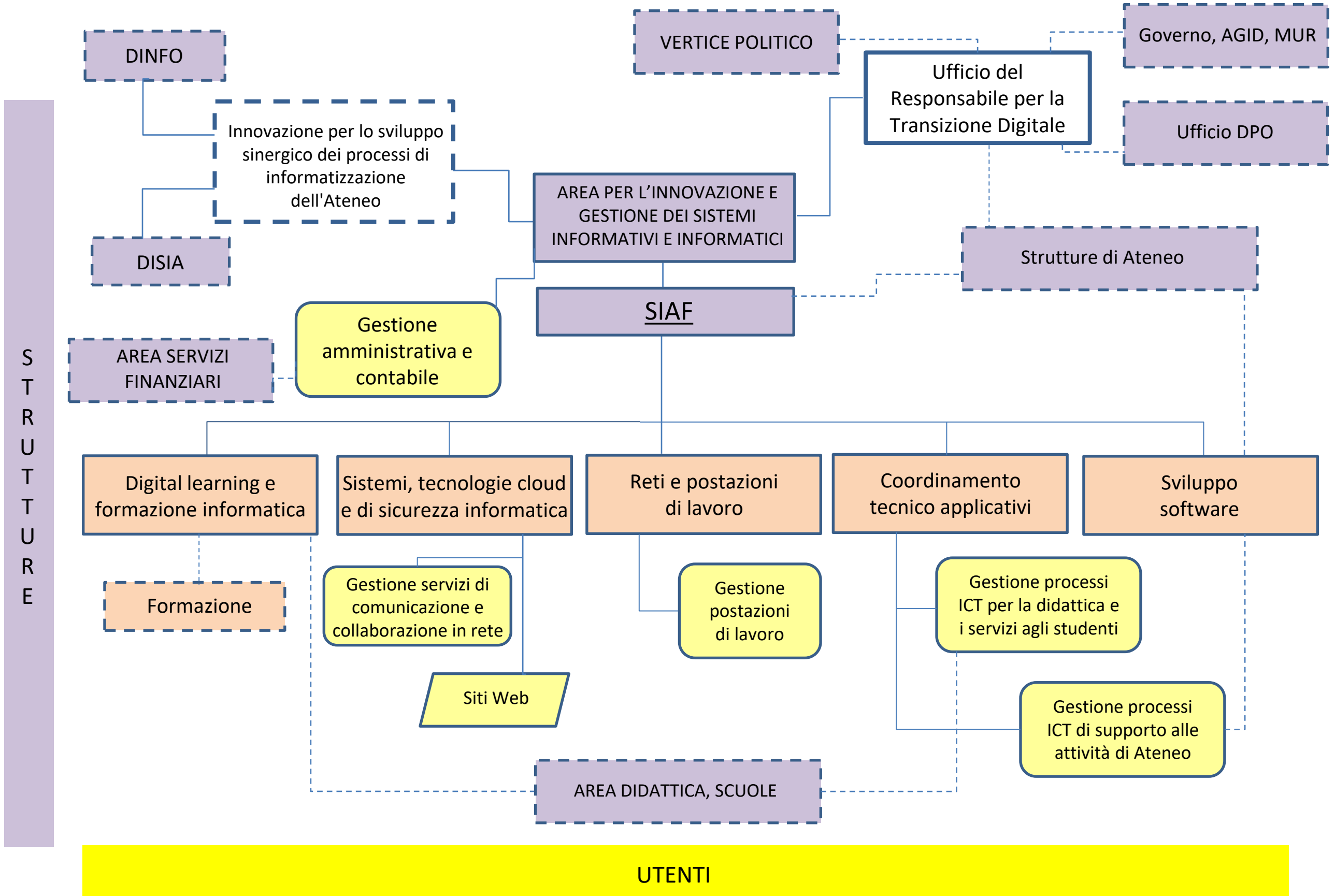
Area Servizi Economici e Finanziari



S
T
R
U
T
T
U
R
E

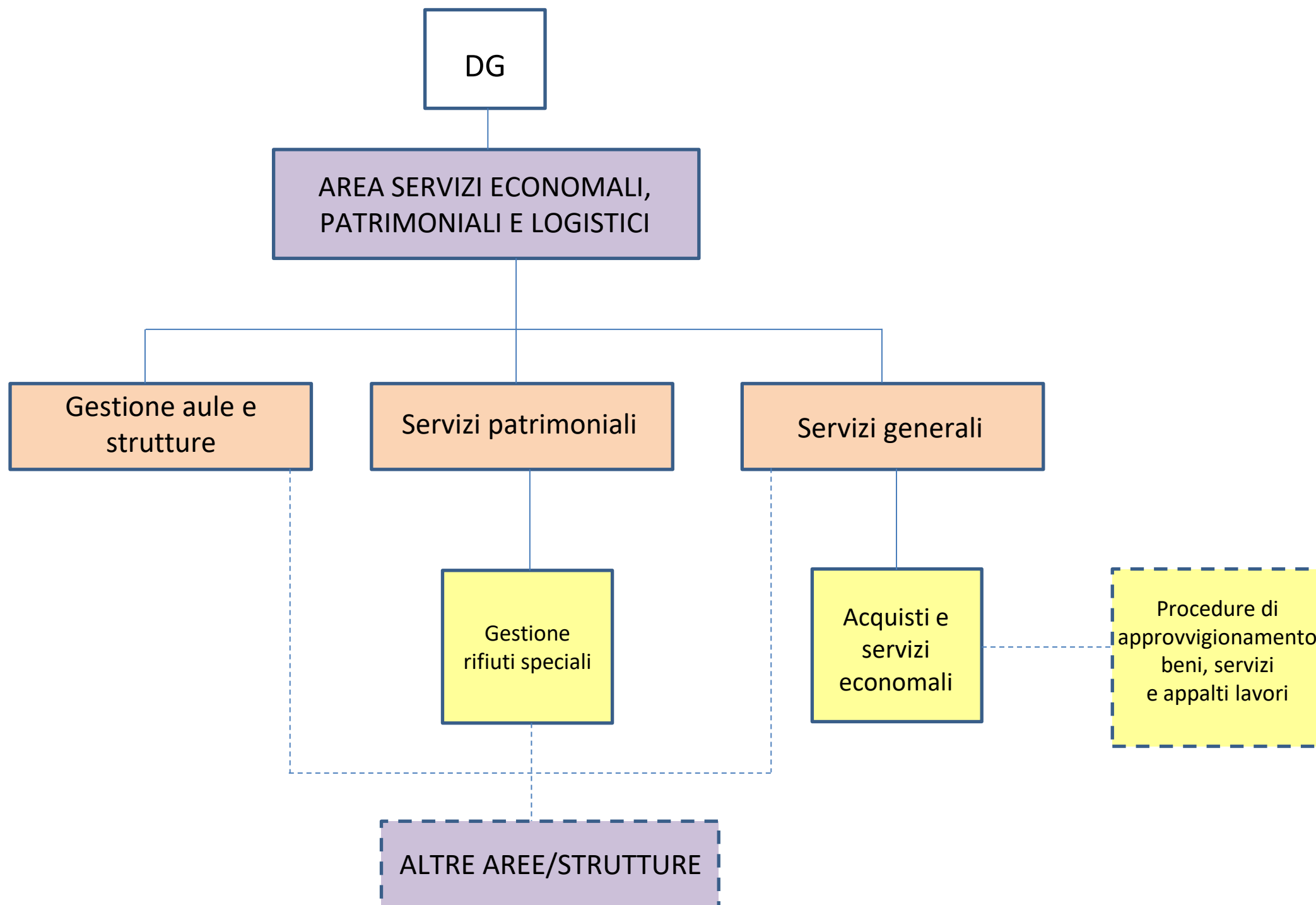
UTENTI

Area per l'Innovazione e Gestione dei Sistemi informativi e informatici



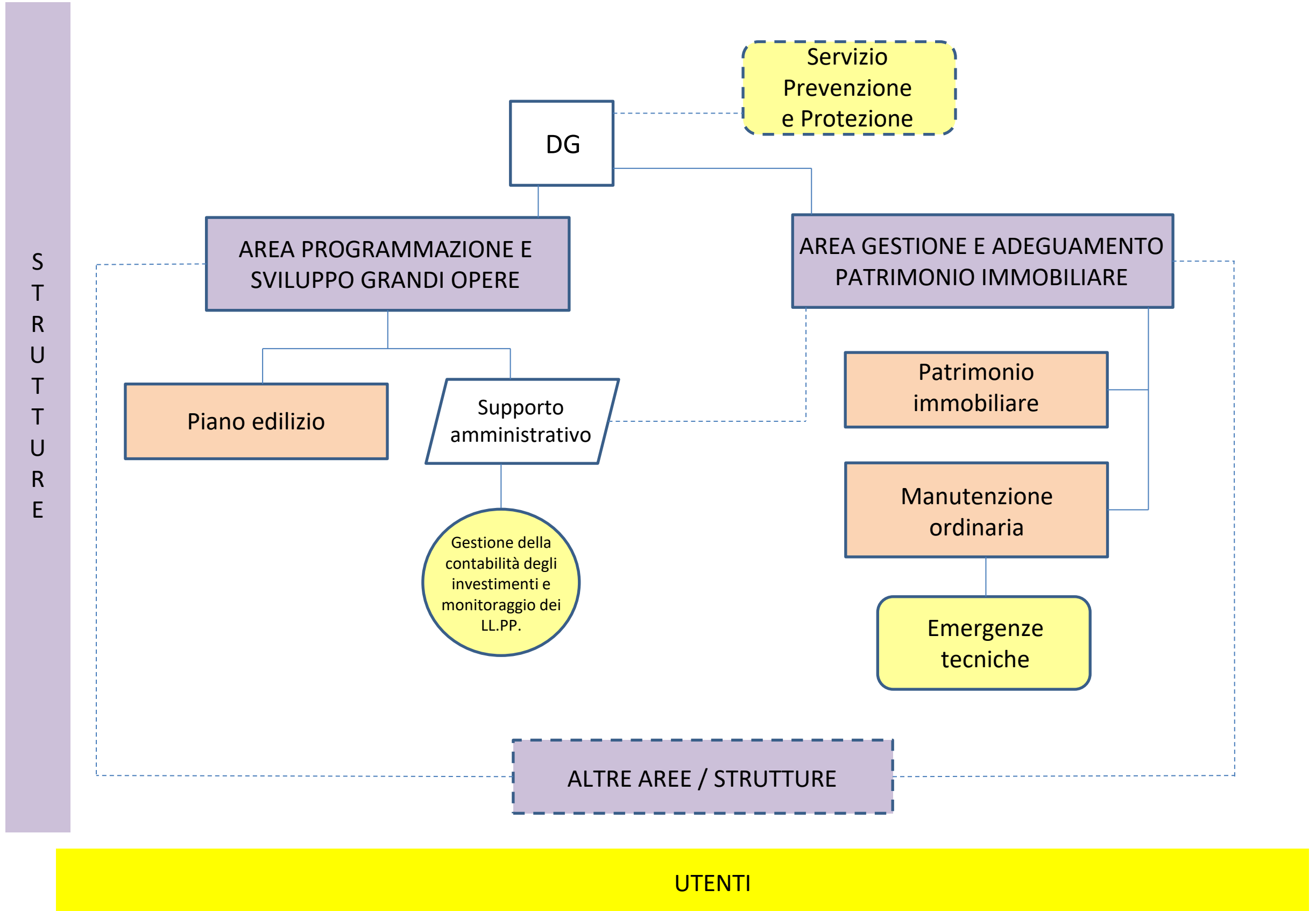
Area Servizi Economici, Patrimoniali e Logistici

S
T
R
U
T
T
U
R
E

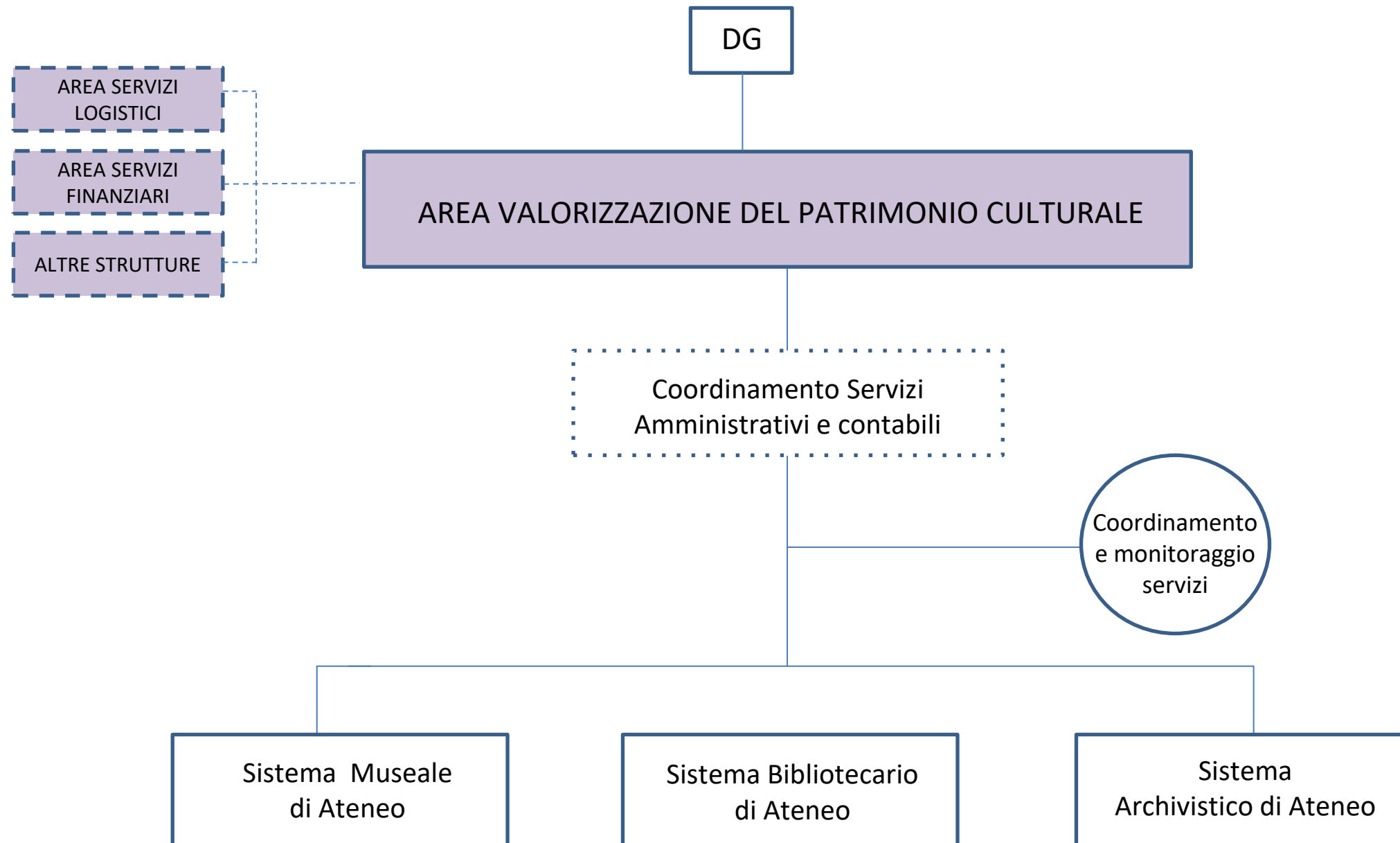


UTENTI

Area Programmazione e sviluppo grandi opere e Area Gestione e adeguamento patrimonio immobiliare

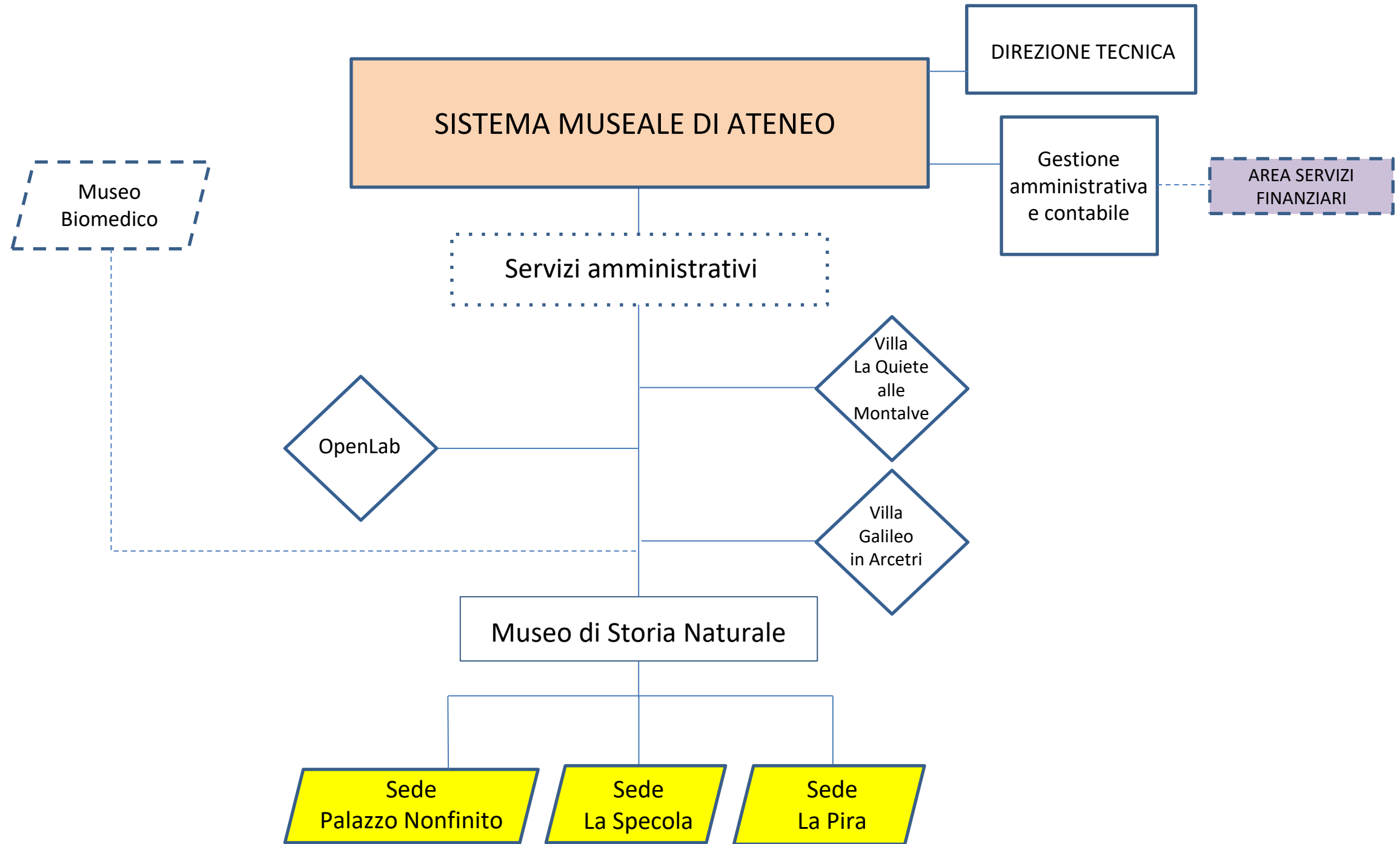


Area per la Valorizzazione del patrimonio culturale



Area per la Valorizzazione del patrimonio culturale

Sistema Museale di Ateneo

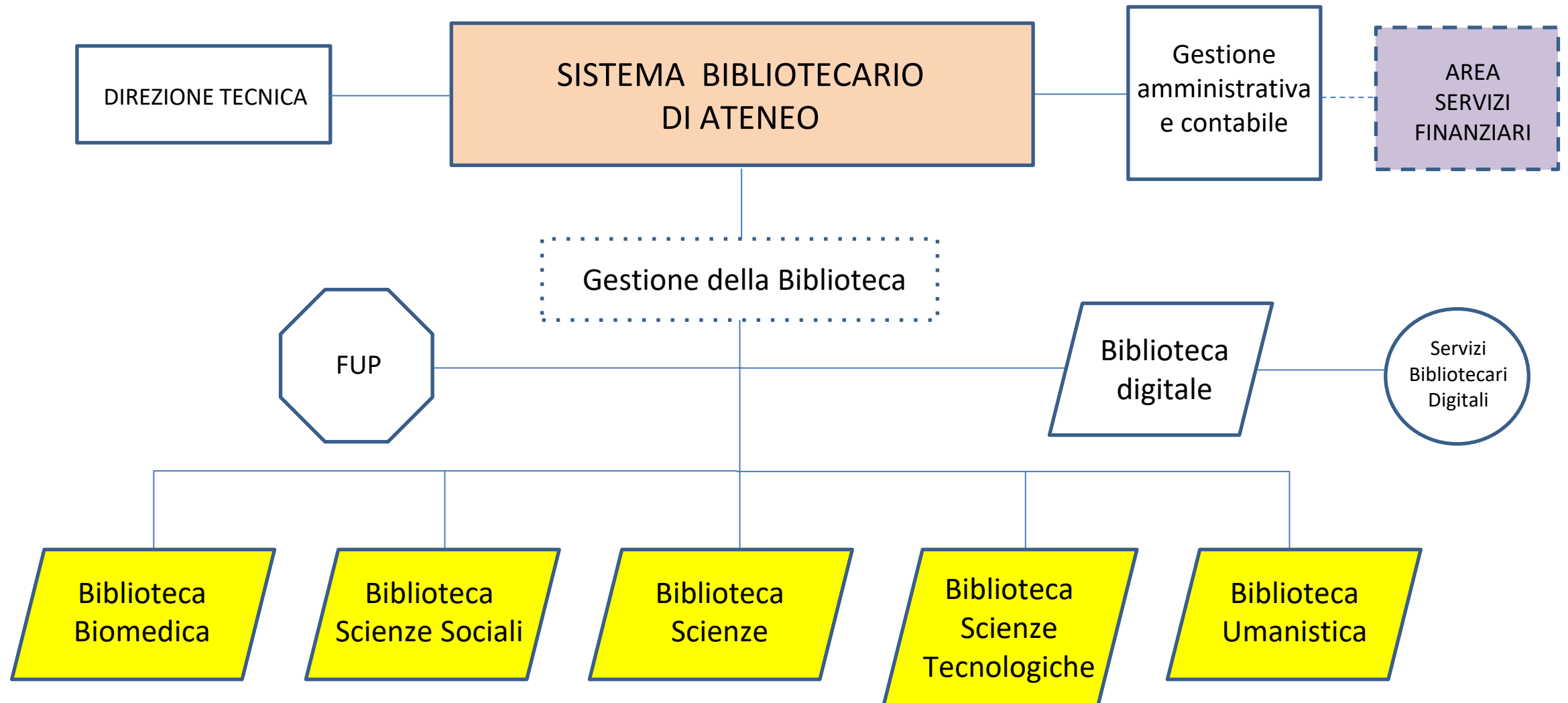


STRUTTURE

UTENTI

Area per la Valorizzazione del patrimonio culturale

Sistema Bibliotecario di Ateneo



S
T
R
U
T
T
U
R
E

UTENTI

Area per la Valorizzazione del patrimonio culturale
Sistema e Servizi Archivistici di Ateneo



S
T
R
U
T
T
U
R
E

UTENTI